

# Fitting Instructions

Revo Intercooler Kit 2.0 TSI Polo GTI (AW)

Fitting Difficulty



Dealer Fit Recommended

### Contents

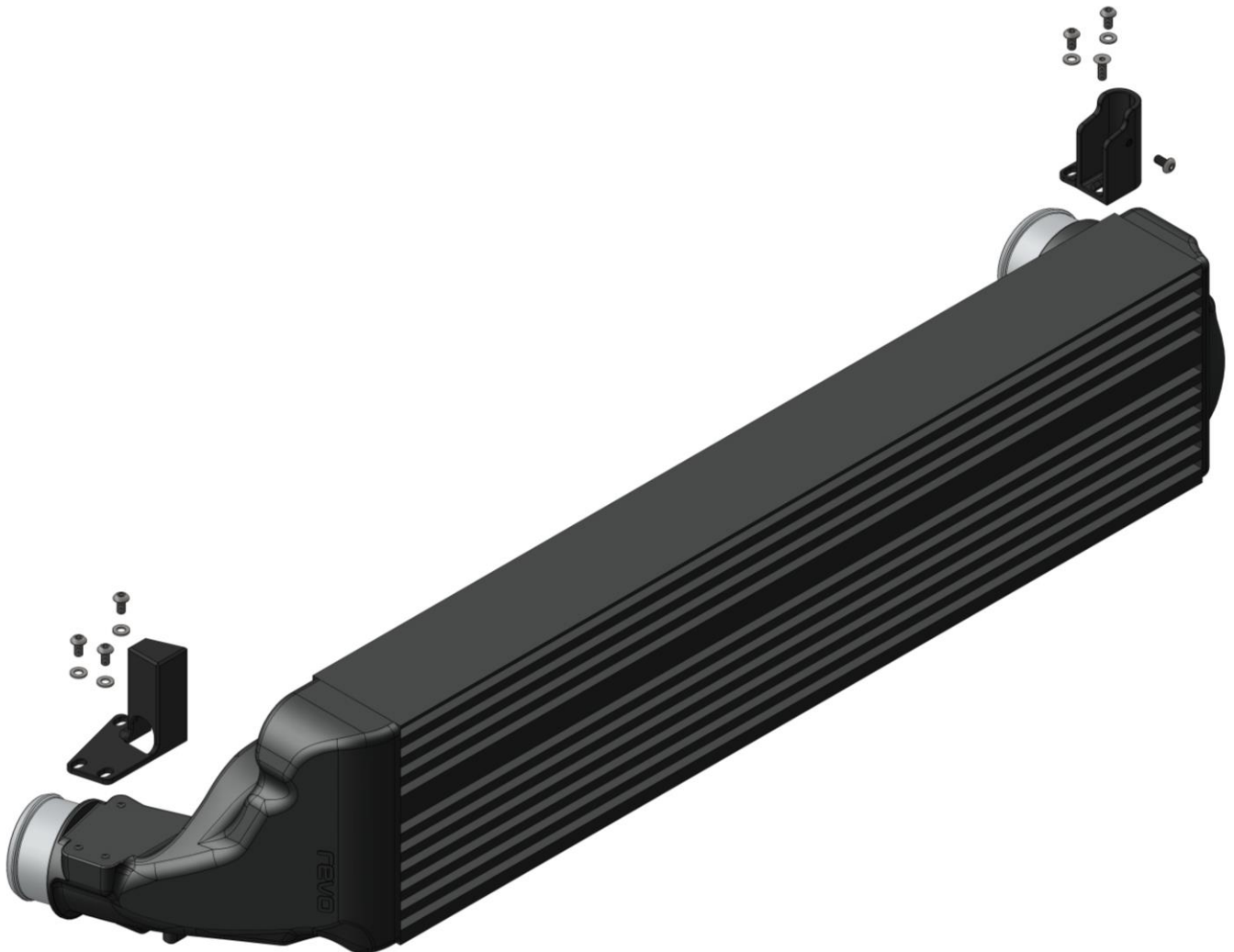
Description	
Revo Intercooler	1
Revo Inlet Bracket	1
Revo Outlet Bracket	1
M5 x 10mm Button Head Bolt	6
M5 x 14mm Countersunk Bolt	1
M5 Washer	5

### Recommended Tools

Tools	Size
Ratchet	
Sockets	7mm, 13mm
Hex Bits	3mm
Torx Bits	T25, T30
Straight Screwdrivers	Small, Medium
Gearbox Stand/Hydraulic Jack	
Block of Wood	50x100mm or equivalent
Alternative Bonnet Support Rod	



Before starting, please ensure that the battery is disconnected and you have ensured the engine is cool. Engine temperatures can remain high for a substantial amount of time after use.



# Fitting Instructions

## Revo Intercooler Kit 2.0 TSI Polo GTI (AW)

Fitting Difficulty

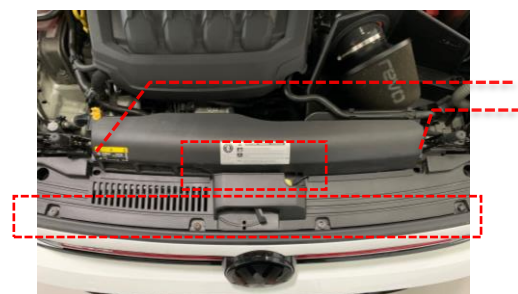
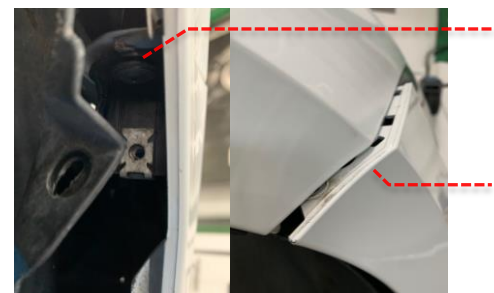
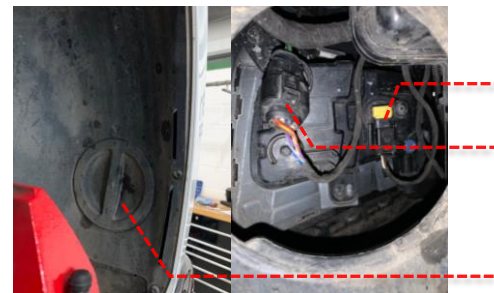
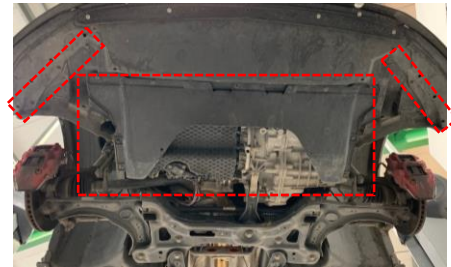


Dealer Fit Recommended



Installation was performed on a UK-spec. Polo GTI (AW). Installation on other vehicles will be similar but may not be exact

- 1 Raise the vehicle and remove the undertray by removing the 9 x screws with a T25 socket. Remove the 3 x screws from the bottom of each wheel liner with the T25 socket.
  
- 2 Remove the 2 x bumper clips from the bottom interior of the bumper cover. Remove each front wheel and remove the 3 x screws from each wheel liner, using a T25 socket.
  
- 3 Remove the access cap from the wheel liner and disconnect the fog light. Repeat on the opposite side of the vehicle. Disconnect the front parking sensor harness connector on one side.
  
- 4 Pull back the wheel liner to reveal the bumper cover bolt behind. Remove the bolt with a T25 socket and repeat on the opposite side. Carefully pull the bumper cover out to unseat it from the wing on each side.
  
- 5 Using the T25 socket, remove the 2 x screws from the front intake scoop and remove the scoop from the vehicle. If installed, disconnect the ACC connector located directly behind the emblem. Remove the 4 x screws from the top of the bumper cover with a T25 socket. Remove the bumper cover from the vehicle and set it aside, out of the work area.



# Fitting Instructions

## Revo Intercooler Kit 2.0 TSI Polo GTI (AW)

Fitting Difficulty

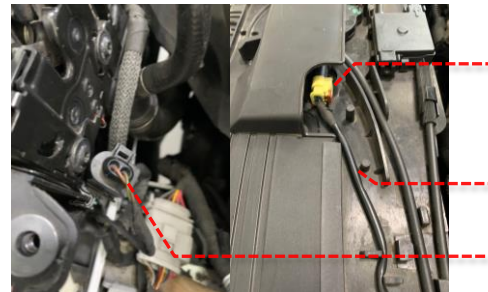


Dealer Fit Recommended

- 6 Support the bonnet with a sturdy support rod. Remove the 6 x screws from the top of the headlight with a T30 socket and remove the metal support plate. Remove the 2 x screws from the exterior side of the headlight with a T25 socket. Disconnect all headlight electrical connectors and remove the headlight assembly from the vehicle. Repeat the process on the opposite side to remove the remaining headlight assembly.



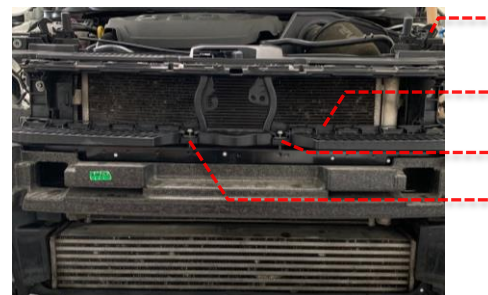
- 7 Disconnect the 2 x bonnet latch sensors as well as the front crash sensor. Unseat then move the connector wiring harnesses from the front panel. Set the electrical harnesses aside in the engine bay.



- 8 Disconnect the horn electrical connector on each side of the vehicle. Using a 7mm socket, loosen both intercooler hose clamps and remove both hoses.



- 9 If installed, unseat then move the ACC wiring harnesses from the top crash bar panel. Remove the top crash bar panel by removing the 2 x shroud bolts with a T30 socket and lifting the panel directly upward.



# Fitting Instructions

## Revo Intercooler Kit 2.0 TSI Polo GTI (AW)

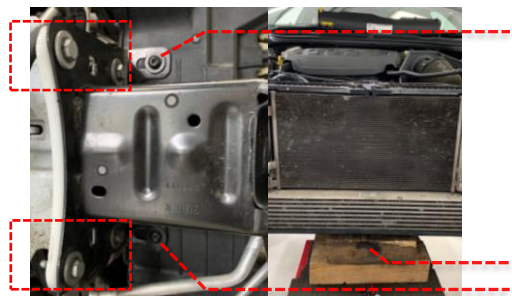
Fitting Difficulty



Dealer Fit Recommended

- 10 Disconnect the ambient temperature sensor connector. Unseat then move the connector wiring harnesses from the front panel.

- 11 Position a stand/jack and block of wood underneath the bottom of the core support to support it. Remove the 4 x screws and 8 x bolts from the crash bar using T30 and 13mm sockets. Remove the crash bar from the vehicle and set it aside, out of the work area.



- 12 Unclip and remove both front air ducts, they will not be reinstalled.



- 13 Using a set of straight screwdrivers, unclip the radiator retaining clips from the core support and tilt the radiator, intercooler, and condenser heat exchanger assembly toward the engine. Lift the heat exchanger assembly directly upward and simultaneously remove the core support from the vehicle. Carefully set the heat exchanger assembly down on the block of wood to support it.



# Fitting Instructions

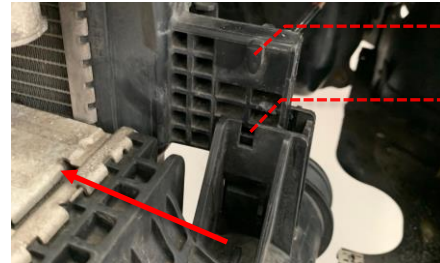
## Revo Intercooler Kit 2.0 TSI Polo GTI (AW)

Fitting Difficulty



Dealer Fit Recommended

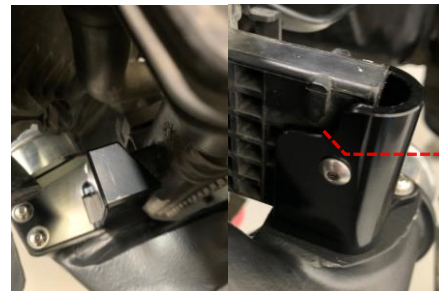
- 14 Unclip the intercooler from the radiator tab and rotate the intercooler downward to clear the radiator bosses shown. Slide the intercooler to the side of the vehicle to disconnect it from the opposite radiator tab. Slide the intercooler downward to remove it from the vehicle. Set it aside, out of the work area.



- 15 Install the 2 x Revo brackets onto the Revo intercooler as shown, with the hardware provided and a 3mm hex socket. Ensure the retaining button head bolt (highlighted) is not protruding into the bracket space. Position the brackets as shown and tighten the 6 x bolts (5 x button head and 1 x countersunk) to 8Nm (71 in.-lbs.).



- 16 Install the semi-closed Revo bracket onto the radiator first (left picture). Rotate the Revo intercooler upward until the bracket is positioned as shown on the opposite side of the radiator. Adjust the Revo bracket positions on the Revo intercooler if the radiator-bracket alignment shown cannot be achieved. Once the alignment shown is achieved, use a 3mm hex socket to tighten the retaining button head bolt until flush with the Revo bracket face. Torque to 5.5Nm (49 in.-lbs.).



- 17 Refit all stock parts back to the vehicle. Reinstallation is the reverse of removal. Follow any factory torque specifications during reinstallation of stock parts. Check all sensors/electrics are reconnected.

**Note:** when reinstalling the crash bar, bend the ambient temperature sensor sheet metal bracket slightly as shown, to ensure proper sensor clearance to the Revo intercooler.

Test drive the vehicle to ensure the vehicle performs correctly and there are no leaks/part interferences during operation. Your installation is now complete!



# Fitting Instructions

Revo Intercooler Kit 2.0 TSI Polo GTI (AW)

Fitting Difficulty



Dealer Fit Recommended

ITEM NO.	DESCRIPTION	QTY.
1	REVO INTERCOOLER ASSEMBLY	1
2	REVO INTERCOOLER INLET BRACKET	1
3	REVO INTERCOOLER OUTLET BRACKET	1
4	M5 x 0.8 x 10MM BUTTON HEAD BOLT STAINLESS STEEL	6
5	M5 x 0.8 x 14MM COUNTERSUNK BOLT STAINLESS STEEL	1
6	5.3MM ID x 10.0MM OD x 1.0MM THICK FLAT WASHER STAINLESS STEEL	5

