

Fitting Instructions

Revo Intercooler Kit 2.0 TFSI B9 A4/A5 (8W/F5)

Fitting Difficulty



Dealer Fit Recommended

Contents

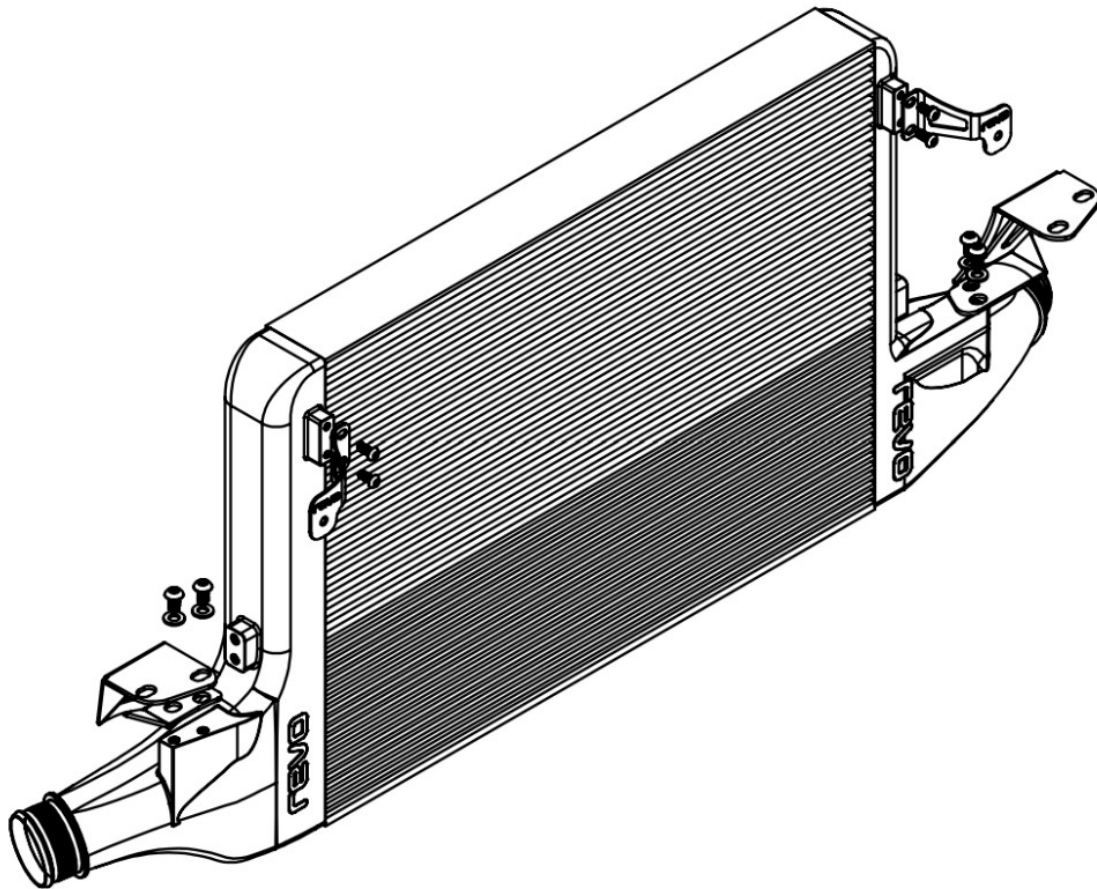
| Description | Quantity |
|-----------------------------|----------|
| Revo Intercooler | 1 |
| Revo Outlet Upper Bracket | 1 |
| Revo Inlet Upper Bracket | 1 |
| Revo Outlet Lower Bracket | 1 |
| Revo Inlet Lower Bracket | 1 |
| M6x14 Button Head Bolt | 4 |
| M8x1.25x14 Button Head Bolt | 4 |
| M8 Flat Washer | 4 |

Recommended Tools

| Tools | Size |
|------------------------------|------------------------|
| Ratchet | |
| Extension | |
| Sockets | 7, 8, 10mm |
| Torx Bits | T25, T30 |
| Long Nose Pliers | |
| Flat Head Screwdriver | Medium |
| Hydraulic Jack/Gearbox Stand | |
| Block of Wood | 50x100mm or equivalent |



Before starting, please ensure that the engine is cool and the battery is disconnected. Engine temperatures can remain high for a substantial amount of time after use.



Fitting Instructions

Revo Intercooler Kit 2.0 TFSI B9 A4/A5 (8W/F5)

Fitting Difficulty

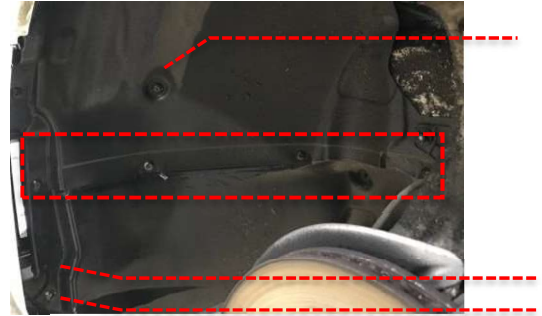


Dealer Fit Recommended

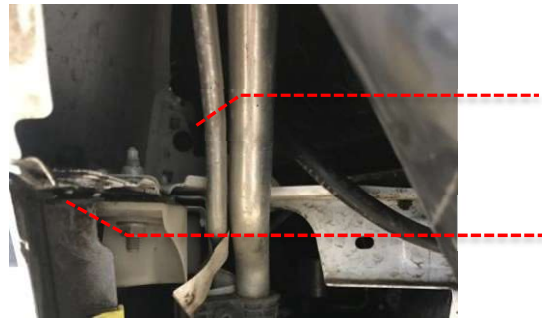


Installation was performed on a UK spec B9 A4 (8W). Installation on other vehicles will be similar but may not be exact.

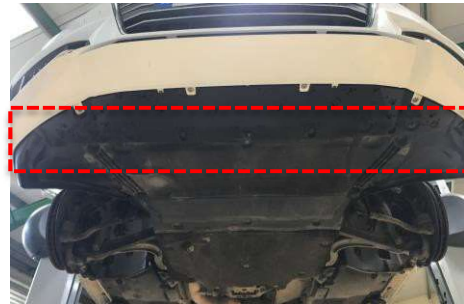
- 1 Raise the vehicle to gain access to the underside. Remove both front wheels. Remove 7 x T25 bolts from the wheel arch liner and the 2 x 10mm plastic nuts. Peel back the wheel arch liner to give access behind.



- 2 Remove the plastic push fit trim clip and the T30 bolt that holds the bumper to the wing. Repeat steps 1 and 2 on the opposite side of the vehicle.



- 3 Remove 5 x T30 and 2 x T25 bolts that secure the front bumper to the main undertray.



- 4 Remove the bonnet release handle by pushing the release button, found at the 12 o'clock position, and pulling up on the handle.

Note: once the bonnet release handle is removed, do not close the bonnet without refitting the handle first.



Fitting Instructions

Revo Intercooler Kit 2.0 TFSI B9 A4/A5 (8W/F5)

Fitting Difficulty

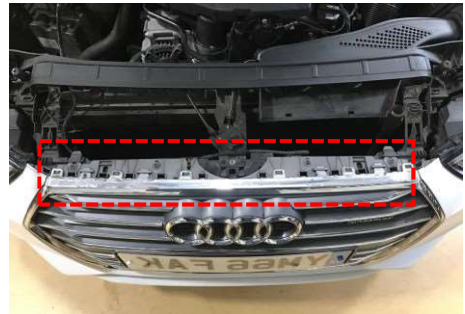


Dealer Fit Recommended

- 5 Remove the slam panel by unclipping along the front edge and then sliding it out from under the front air scoop.



- 6 Remove 4 x T30 bolts from the top of the bumper.



- 7 Carefully pull the bumper free from the corner at each side.



- 8 Whilst standing in front of the vehicle, carefully pull the bumper forwards to release it.



Fitting Instructions

Revo Intercooler Kit 2.0 TFSI B9 A4/A5 (8W/F5)

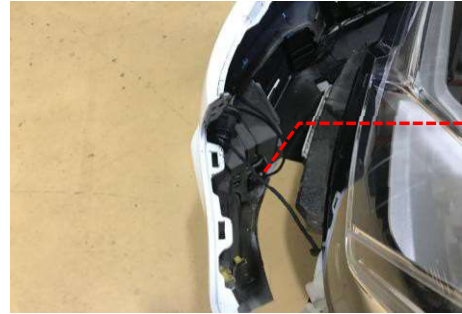
Fitting Difficulty



Dealer Fit Recommended

- 9 Before the bumper can be removed fully, disconnect the front parking sensor located on the left-hand side of the bumper. Remove the front bumper from the vehicle.

Note: with one person either side of the bumper, remove the front bumper and store safely so as not to damage any paintwork.



- 10 Remove the multiplug from the sensors at each end of the crash bar foam padding. Pull the red clip out and then squeeze the multiplug to release.



- 11 Remove the crash bar foam padding and put aside.



- 12 Remove the 2 x 13mm bolts and T30 bolt from each side of the crash bar and remove crash bar from the vehicle.



Fitting Instructions

Revo Intercooler Kit 2.0 TFSI B9 A4/A5 (8W/F5)

Fitting Difficulty



Dealer Fit Recommended

- 13 Before fully removing the crash bar, disconnect the ambient air temperature sensor from the crash bar and place it outside of the work area.



- 14 Using a 7mm socket, loosen the hose clip on the discharge pipe and remove the pipe from the OE intercooler. Repeat for the throttle pipe on the opposite side.



- 15 Using a pair of long nose pliers, release the clips at the top of the OE intercooler, one on each side.



- 16 Roll the OE intercooler forwards to remove it from the bottom clips and lift the intercooler out.



Fitting Instructions

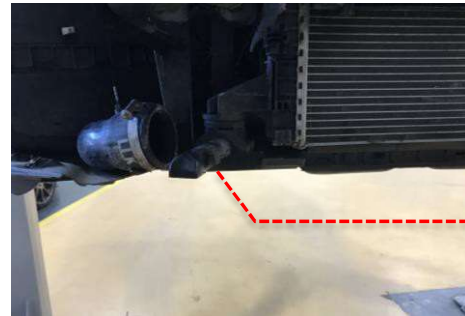
Revo Intercooler Kit 2.0 TFSI B9 A4/A5 (8W/F5)

Fitting Difficulty

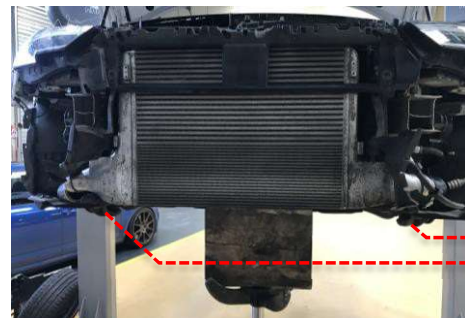


Dealer Fit Recommended

- 17 Remove the 8mm bolt from the plastic bottom radiator mount, pull the mount towards you and twist it outwards. Repeat for the opposite side.



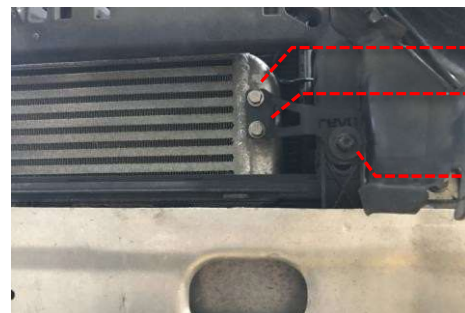
- 18 Position the Revo intercooler in front of the radiator and use a gearbox stand/hydraulic jack and a piece of wood to support it. Straighten the bottom radiator mounts and refit the 8mm bolts.



- 19 Loosely refit the crash bar but do not bolt it back in place.



- 20 Fit the 2 x Revo smaller intercooler brackets to the top of the Revo intercooler using the 4 x 10mm bolts (supplied) and then refit the 2 x T30 bolts that go through the Revo bracket, crash bar and top radiator mount. Do not tighten yet.



Fitting Instructions

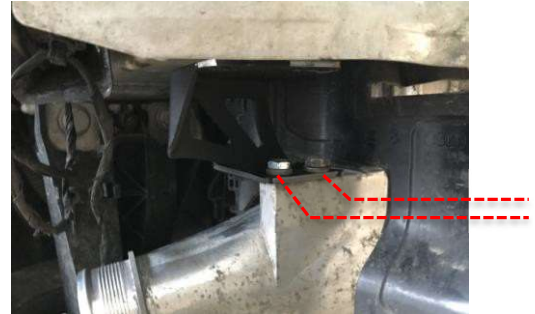
Revo Intercooler Kit 2.0 TFSI B9 A4/A5 (8W/F5)

Fitting Difficulty

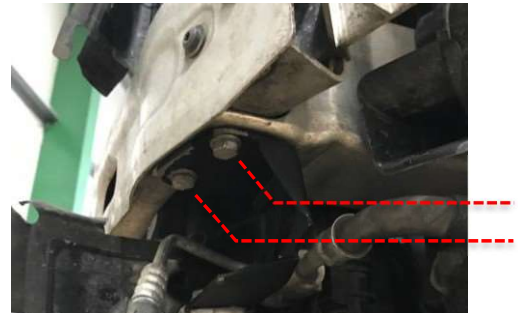


Dealer Fit Recommended

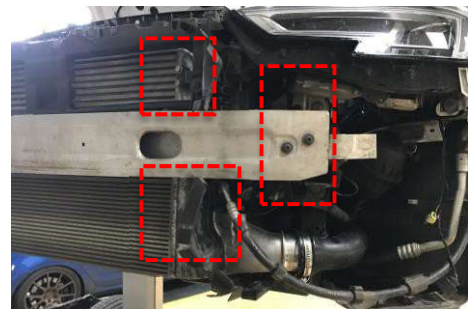
- 21 Fit the Revo lower intercooler brackets to the Revo intercooler using the 4 x 13mm bolts and 8 x washers (supplied). All washers are to be placed on top of the bracket.



- 22 Refit the 4 x 13mm crash bar bolts, which now also go through the Revo lower intercooler brackets. Do not tighten yet. Remove the gearbox stand/hydraulic jack and square up the Revo intercooler.



- 23 Tighten the 4 x 13mm bolts that hold the lower brackets to the Revo intercooler, then tighten the 4 x 13mm crash bar bolts, followed by the 4 x 10mm bolts holding the top brackets to the Revo intercooler and finally the 2 x T30 bolts holding the top brackets to the top radiator mounts.



- 24 Refit all OE parts back to vehicle. Reinstallation is the reverse of removal. Follow any factory torque specification during reinstallation of OE parts. Check all sensors/electrics are reconnected. Also check bonnet release handle is refitted. Test drive the vehicle to ensure vehicle performs correctly and there are no leaks/part interference during operation. Your installation is now complete!

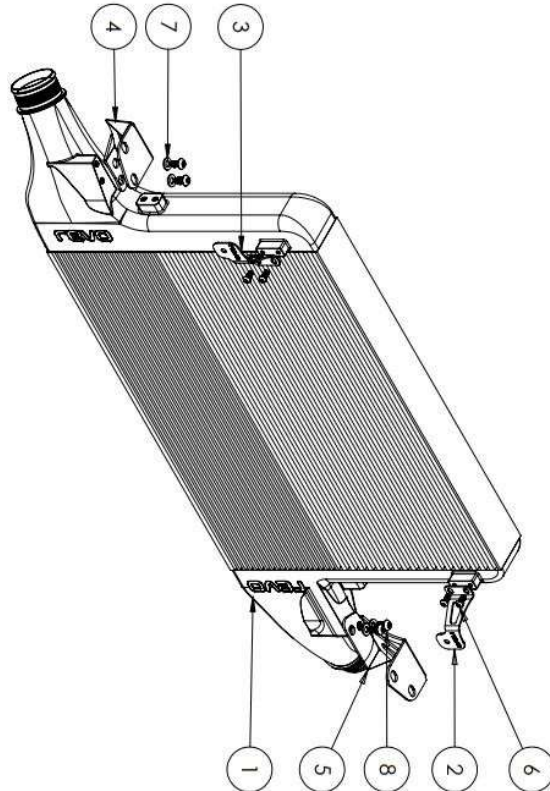
Fitting Instructions

Revo Intercooler Kit 2.0 TFSI B9 A4 /A5 (8W/F5)

Fitting Difficulty



Dealer Fitment Recommended



| ITEM NO. | DESCRIPTION | QTY. |
|----------|------------------------------------|------|
| 1 | INTERCOOLER | 1 |
| 2 | UPPER OUTLET BRACKET | 1 |
| 3 | UPPER INLET BRACKET | 1 |
| 4 | LOWER INLET BRACKET | 1 |
| 5 | LOWER OUTLET BRACKET | 1 |
| 6 | M6 x 1mm x 14mm BHSCS STAINLESS | 4 |
| 7 | M8 WASHER STAINLESS STEEL | 4 |
| 8 | M8 x 1.25mm x 14mm BHSCS STAINLESS | 4 |