

Fitting Instructions

Revo Intercooler Pipe Upgrade Kit 2.0 TSI Polo GTI (AW)

Fitting Difficulty



Dealer Fit Recommended

Contents

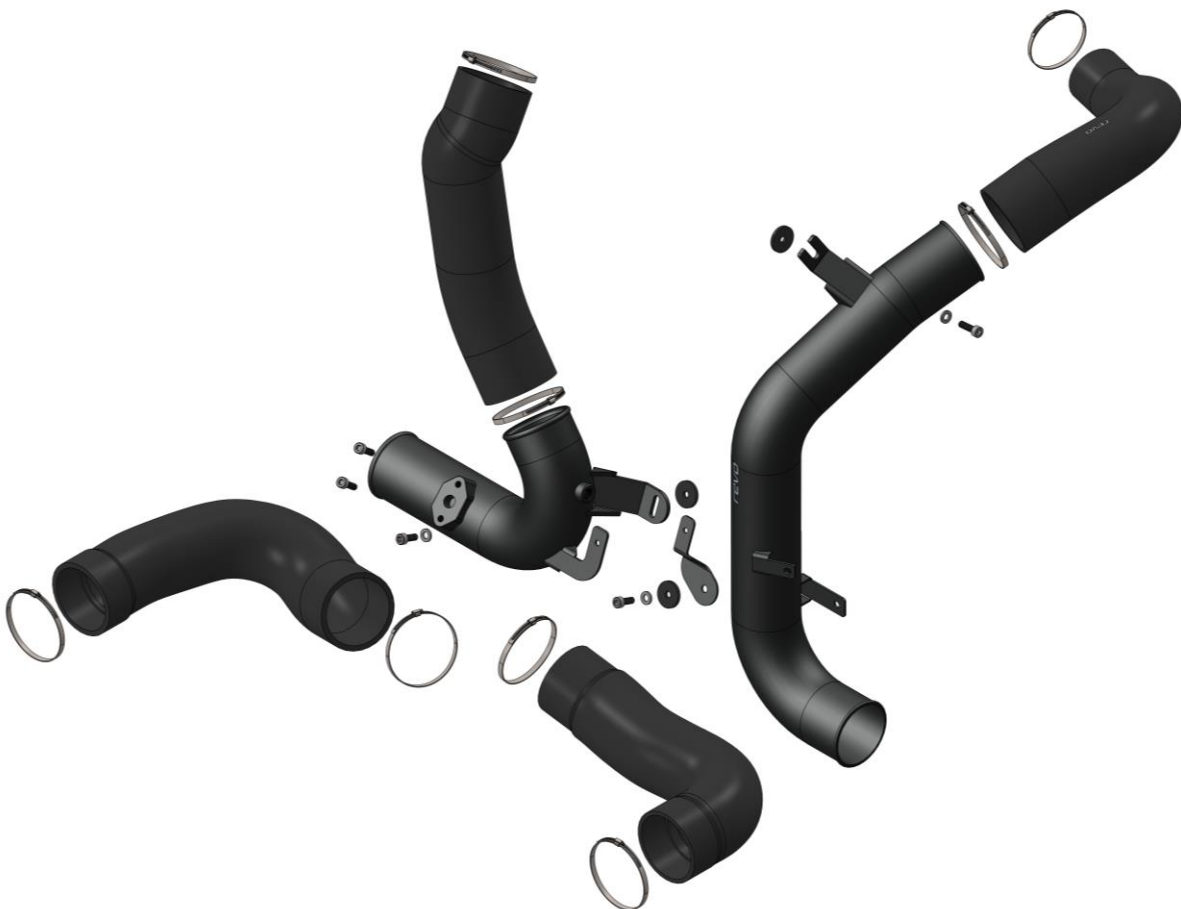
Description	
Revo Discharge Hard Pipe Assembly	1
Revo Throttle Hard Pipe Assembly	1
Revo Discharge Hose	1
Revo Throttle Hose	1
Revo Intercooler Inlet Hose	1
Revo Intercooler Outlet Hose	1
M6 x 20mm Bolt	3
M6 x 16mm Bolt	2
M6 Flat Washer	3
M6 Rubber Washer	3
60-80mm Hose Clamp	7
50-70mm Hose Clamp	1

Recommended Tools

Tools	Size
Ratchet	
Sockets	7, 8mm
Hex Bits	4mm
Torx Bits	T25, T30
Wobble Extension	
Flat Head Screwdriver	Small
Pick	Small



Before starting, please ensure that the battery is disconnected and you have ensured the engine is cool. Engine temperatures can remain high for a substantial amount of time after use.



Fitting Instructions

Fitting Difficulty



Dealer Fit Recommended

Revo Intercooler Pipe Upgrade Kit 2.0 TSI Polo GTI (AW)



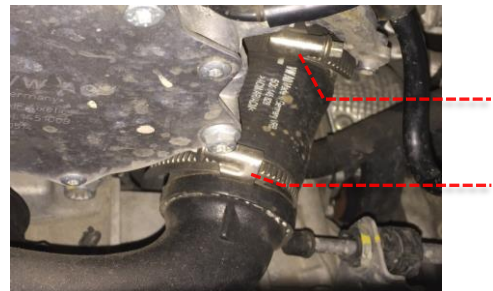
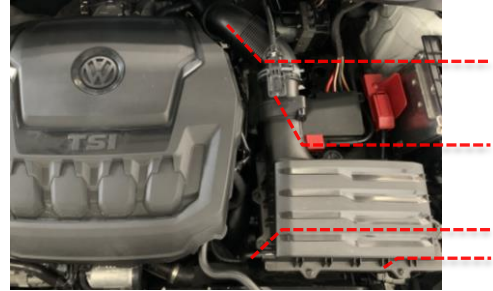
Installation was performed on a UK-spec. Polo GTI (AW). Installation on other vehicles will be similar but may not be exact

- 1 Remove the intake airbox, MAF and hose assembly. Start by loosening the hose clamp at the turbo inlet (7mm socket). Disconnect the small vacuum hose and secondary air pump pipe (if installed) from the airbox. Disconnect the MAF sensor connector. Pull the main airbox directly upwards to disengage the rubber grommets. Set the airbox aside, out of the work area.

- 2 Unclip the sensor housing from the battery tray (if installed) and set it aside, out of the work area.

- 3 Loosen the 2 x hose clamps on the turbocharger discharge hose (7mm socket). Do not remove the hose yet.

- 4 Loosen the mounting bolt on the discharge hard pipe (T30 bit).



Fitting Instructions

Revo Intercooler Pipe Upgrade Kit 2.0 TSI Polo GTI (AW)

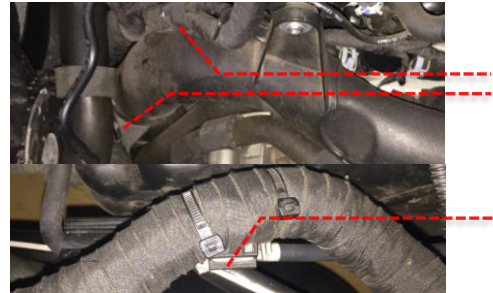
Fitting Difficulty



Dealer Fit Recommended

- 5 Disconnect the wire loom from the discharge hard pipe at the 2 x mounting locations shown (if installed). Also disconnect the wire loom routing clip on the transmission bracket.

Note: a pick or small flat head screwdriver may aid in disconnecting the wire loom mounting point on the transmission bracket.

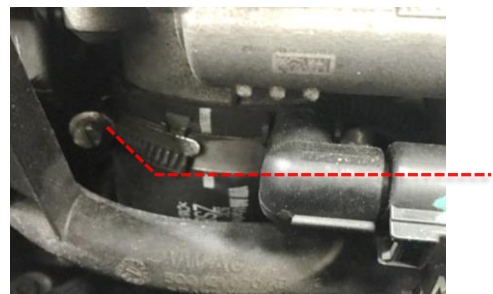


- 6 If installed, disconnect the coolant line from the routing clip mounted to the discharge hard pipe.

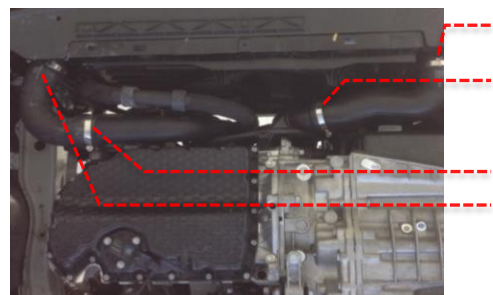


- 7 Loosen the hose clamp holding the stock hose to the throttle body (7mm socket).

Note: a wobble socket extension may be useful to reach the screw on the clamp.



- 8 Raise the vehicle to gain access to the underside. Once raised, remove the 2 x stock intercooler hoses by loosening the 4 x stock hose clamps (7mm socket).



Fitting Instructions

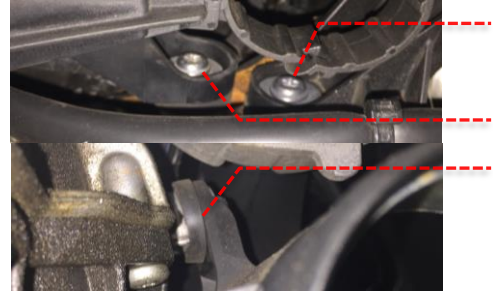
Revo Intercooler Pipe Upgrade Kit 2.0 TSI Polo GTI (AW)

Fitting Difficulty

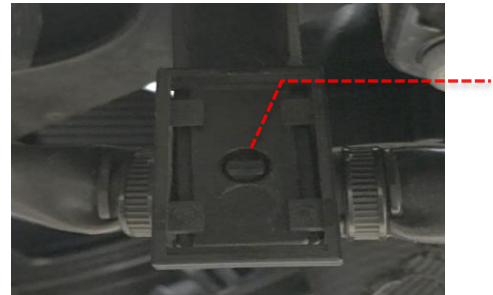


Dealer Fit Recommended

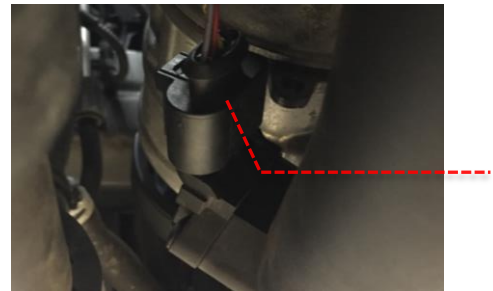
- 9 Remove the 3 x bolts holding the stock discharge/throttle hard pipes to the engine block (T30 bit).



- 10 Unclip the wire loom routing clip on the discharge pipe by pressing the tab shown and pulling the loom downward.



- 11 Unplug the MAP sensor, located on the throttle hard pipe.



- 12 Gently pull the stock throttle pipe/hose assembly down from underneath the vehicle until the hose unseats from the throttle body. Remove the assembly from the bottom of the vehicle and remove the 2 x screws (T25 bit) holding the MAP sensor to the throttle hard pipe. Carefully remove the sensor from the pipe and set the hard pipe aside, out of the work area.



Fitting Instructions

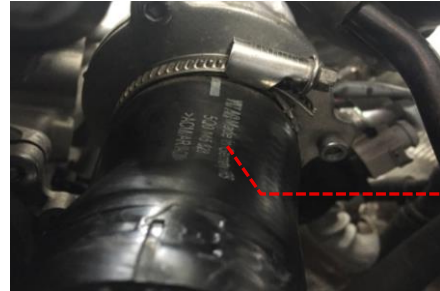
Revo Intercooler Pipe Upgrade Kit 2.0 TSI Polo GTI (AW)

Fitting Difficulty



Dealer Fit Recommended

- 13 Remove the turbocharger discharge hose and set it aside, out of the work area.



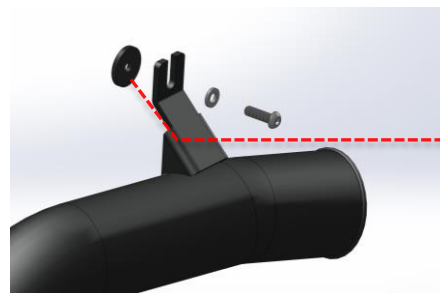
- 14 Remove the discharge hard pipe from the top of the engine bay and remove the coolant hose routing clip from the pipe (if installed). Set both aside, out of the work area.

Note: remove the pipe slowly – many coolant lines/wiring looms will catch on the pipe as it's removed from the engine bay.

- 15 Install the supplied 50-70mm hose clamp onto the small end of the Revo discharge hose and install the supplied 60-80mm clamp onto the large end. Install the Revo discharge hose onto the Revo discharge hard pipe and install both into the engine bay.



- 16 Align the bracket on the Revo discharge hard pipe with the threaded hole on the engine head bracket. Install the provided rubber washer between the engine block bracket and the Revo hard pipe bracket. Loosely install the M6 x 20 bolt (4mm hex bit) and metal flat washer provided, but do not tighten yet.



Fitting Instructions

Revo Intercooler Pipe Upgrade Kit 2.0 TSI Polo GTI (AW)

Fitting Difficulty

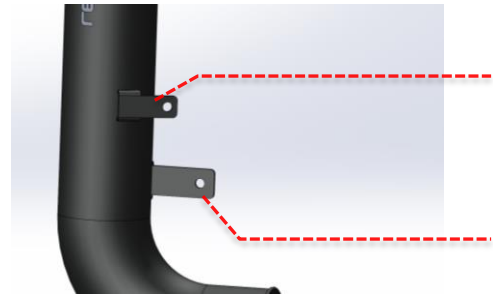


Dealer Fit Recommended

- 17 Install the Revo discharge hose onto the turbocharger outlet. Align the Revo discharge hard pipe and hose so that the hose has ~4mm of clearance to the engine head in the areas shown.



- 18 Reclip the wire loom routing clip to the upper discharge pipe bracket. Install the coolant line routing clip (if originally installed) onto the lower discharge pipe bracket and reinstall the coolant hose into the clip. Reclip the wire loom to the transmission bracket.



- 19 Install the Revo intercooler inlet hose and 2 of the provided 60-80mm hose clamps (8mm socket). Do not tighten the hose clamps yet.

- 20 Check the clearance of the Revo discharge hard pipe to the radiator fan shroud. If less than ~5mm, readjust the hose and hard pipe until there is ~5mm clearance at the radiator and ~4mm hose clearance to the engine head (Step 17). Once complete, the upper discharge mounting bolt to 35Nm (26 ft.-lbs.) (4mm hex bit) and tighten all hose clamps (8mm socket).



- 21 Recheck for the required discharge pipe/hose clearance after tightening all hoses and the Revo discharge hard pipe bracket bolt.

Fitting Instructions

Revo Intercooler Pipe Upgrade Kit 2.0 TSI Polo GTI (AW)

Fitting Difficulty

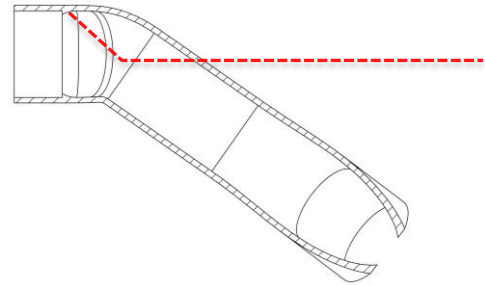


Dealer Fit Recommended

- 22 Install the provided 60-80mm hose clamp on the end of the Revo throttle hose with an internal step and place the clamp as shown.



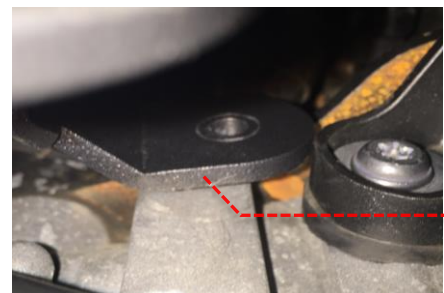
- 23 Install the Revo throttle hose into the engine bay, ensuring the Revo hose end with the internal step goes onto the throttle body. Rotate the hose on the throttle body until it has ~2.0mm of clearance to all parts within the engine bay. Install another provided 60-80mm hose clamp onto the open end of the hose.



- 24 Install the MAP sensor into the Revo throttle hard pipe and secure it using the provided 2 x M6 x 16mm bolts (4mm hex bit). Torque the bolts to 8Nm (71 in.-lbs).



- 25 Install the Revo throttle hard pipe into the Revo throttle hose. Bolt the Revo throttle hard pipe to the block using the M6 x 20mm bolt (4mm hex bit) & M6 metal washer supplied, in the location shown. Place the rubber washer supplied between the Revo pipe bracket and block. Do not tighten the bolt yet.



Fitting Instructions

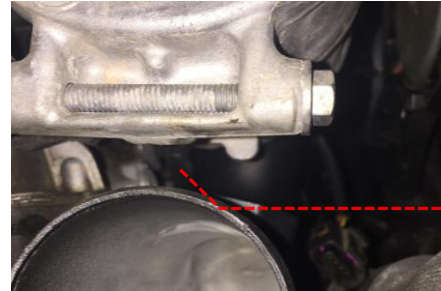
Fitting Difficulty



Dealer Fit Recommended

Revo Intercooler Pipe Upgrade Kit 2.0 TSI Polo GTI (AW)

- 26 Align the Revo throttle hard pipe until there is a ~6-7mm gap between the top of the hard pipe and the bottom of the air conditioning compressor. Once complete, torque the M6 throttle pipe bolt to 30Nm (22 ft.-lbs).



- 27 Install the coolant routing clip onto the Revo throttle hard pipe bracket.



- 28 Install the remaining intercooler hose onto the Revo throttle hard pipe. Confirm that ~2-3mm of clearance remains between the hose and the underside of the air conditioning compressor after installation. Readjust the Revo throttle hard pipe if necessary to achieve a ~2-3mm gap between the hose and the air conditioning compressor. Once complete, tighten all throttle-side hose clamps (8mm socket).



- 29 Double check the overall installation for loose bolts/clamps and interference with and OE parts.

Test drive the vehicle to ensure the vehicle performs correctly and there are no leaks/part interferences during operation. Your installation is now complete!

Fitting Instructions

Revo Intercooler Pipe Upgrade Kit 2.0 TSI Polo GTI (AW)

Fitting Difficulty



Dealer Fit Recommended

ITEM NO.	DESCRIPTION	QTY.
1	REVO DISCHARGE HARD PIPE ASSEMBLY	1
2	REVO THROTTLE HARD PIPE ASSEMBLY	1
3	REVO DISCHARGE HOSE	1
4	REVO THROTTLE HOSE	1
5	REVO INTERCOOLER INLET HOSE	1
6	REVO INTERCOOLER OUTLET HOSE	1
7	M6 x 1.0 x 16MM CAP HEAD BOLT STAINLESS STEEL	2
8	M6 x 1.0 x 20MM CAP HEAD BOLT STAINLESS STEEL	3
9	M6 6.4MM ID x 12.0MM OD x 1.8MM THICK STAINLESS STEEL FLAT WASHER	3
10	50-70MM STAINLESS STEEL WORM DRIVE HOSE CLAMP	1
11	60-80MM STAINLESS STEEL WORM DRIVE HOSE CLAMP	7
12	M6 x 25MM OD x 3MM THICK RUBBER FLAT WASHER	3

